

WALNUT HILL

SUMMER THEATER | WALNUT HILL

# Live your Passion



[WWW.WALNUTHILLARTS.ORG](http://WWW.WALNUTHILLARTS.ORG)



## CURRICULUM AND TRAINING

Classes meet daily Monday through Friday for the duration of the program. The classes are small and allow students to receive individualized attention. Through constructive criticism and feedback they develop the skills necessary to strengthen their work. All students are required to take two classes and the acting methods taught (i.e., Meisner, Adler, Strasberg, Chekhov) depend upon the teachers with whom the students are working. Students may also have the opportunity to work with guest faculty from some of the country's leading colleges and universities such as The Juilliard School, Carnegie Mellon University, Cincinnati College Conservatory of Music, and The Boston Conservatory.

Students alternate rehearsal times for their play and musical for 6 hours a day Monday through Friday and 2 -1/2 hours on Sunday evenings. Students leave Walnut Hill with a heightened sense of accomplishment and a confidence that applies to all facets of their lives.



## COURSES

All students will take the following three classes:

- Acting
- Musical Theater
- Movement: Jazz Dance and Musical Theater Dance Styles

## PERFORMANCE

All students will be cast in a play and a musical as well as participate in several ensemble numbers of a second musical.

## FACILITIES

### Jane Oxford Keiter Center for the Performing Arts

**Stephanie Bonnell Perrin Theater** The 350-seat Perrin Theater is the principal home and performance space for Summer Theater. The theater is a professional-level venue with full stage size wings and a 60-foot fly loft with thirty-two counter weight battens. The theater has a sophisticated sound and wireless microphone system as well as an electronic lighting system and a double-sprung stage floor. The Perrin Theater also has a professional scene shop adjacent to the stage.

In addition, the Keiter Center includes a Green Room, acting studios, costume shops, spacious dressing rooms with showers, lockers, hanging racks and specially lit theatrical make-up mirrors.

**Riggi Black Box Theater** The 80-movable-seat Black Box Theater serves as both a performance and instructional space for the Summer Theater program. The Black Box Theater is a fully circuited and flexible space.

Other campus facilities include five movement studios as well as multiple music studios and recital halls.

## TYPICAL SCHEDULE

8:00 – 8:45	Breakfast
9:00 – 9:50	Class I
9:55 – 10:10	Company Meeting
10:15 – 11:05	Class II
11:10 – 12:00	Class III
12:00 – 1:00	Lunch
1:00 – 3:15	Rehearsal
3:15 – 4:30	Free Time
4:30 – 5:30	Company Rehearsal
5:30 – 6:30	Dinner
6:45 – 9:15	Rehearsal/Performance
9:15 – 9:45	Free Time
9:45	Check-In/Dorm Curfew

## SUMMER STOCK FOR THE YOUNG ACTOR

Our program develops knowledge in all aspects of theatrical studies in preparation for further study in school and college. The summer season consists of six productions in five weeks: four plays and two musicals. Based on auditions held during the first weekend of the program, the company is divided into four casts. Each student participates in one play and two musicals (see above). Each production is performed on two consecutive evenings in the Keiter Performing Arts Center and is open to the public. Performances are well attended by the local community as well as alumni of the Summer Theater School. Because of the repertory nature of our program, students must commit to participating for the entire five weeks.



### SAMPLE OF PAST PRODUCTIONS

Antigone, Grapes of Wrath, All in the Timing, The Taming of the Shrew, Tommy, Guys and Dolls, Evita, and Seussical

## GABE KING

## WALNUT HILL



As an artist, being at Walnut Hill is like being on the Olympic Team; you can't find a better place. But more importantly as a person, you are surrounded by people from all over the world, passionate people who make you want to be your best. Walnut Hill helped me decide what I want to do with my life. I can't imagine a better place for a young artist to flourish.

## THEATER FACULTY

The professional faculty is comprised of approximately 20 experienced teachers and artists, many of whom have advanced degrees in their respective disciplines. In addition to academic and/or professional training, we provide teachers who have experience as performers. With this combination of training and experience, we offer students a conservatory atmosphere in which to study and develop. Unlike many summer programs, classes are small and teachers are mentors. The student-to-faculty ratio is 8:1.

**Joe Cabral** Artistic Director, is also the Director of Theater at Walnut Hill School. Mr. Cabral serves on the Executive Council of the Massachusetts High School Drama Guild, Inc., and is a member of the National Educational Theater Association. He worked professionally in theater, film, and television until 1985. Prior to coming to Walnut Hill in 1994, his productions consistently won multiple awards at the state level, including the championship for Massachusetts High School Drama in 1992 and 1994. Mr. Cabral's work at Walnut Hill has been twice recognized by the American High School Theater Festival (AHSTF), a national competition for secondary school theater. In 1998 and 2002, Walnut Hill was invited by AHSTF to represent the United States at the Edinburgh Fringe Festival in Scotland. Mr. Cabral has also directed productions at The Norwood Theatre and Boston University.

**Mike Bucco** Associate Artistic Director, has been part of the Walnut Hill Summer Theater faculty since 1995. His professional experience includes nine years as Production Manager for Walt Disney Entertainment in Orlando, Florida. Mr. Bucco has worked as a professional actor, director, and stage manager, and he served as the Production Manager at Boston Conservatory. He is a member of Actor's Equity Association. In addition to his duties with the Summer Theater program, Mr. Bucco is also an Associate Dean for Admission and Placement at Walnut Hill.

## ADMISSION

Admission to the Summer Theater program is highly selective. Each year Walnut Hill enrolls students from around the nation. Candidates for admission should demonstrate high levels of dedication and discipline regardless of their previous theater experience and training.

To apply to Summer Theater at Walnut Hill, please submit the following:

- Complete application form (available at [www.walnuthillarts.org](http://www.walnuthillarts.org))
- A nonrefundable application fee (see application)
- A photograph of the applicant. This may be in color or black & white. An informal family snapshot is sufficient.
- An essay of not less than 250 words about why the student wants to attend the summer theater program.
- Two letters of recommendation from teachers, coaches, or instructors who know the student well, preferably a theater, dance or voice professional. (form available at [www.walnuthillarts.org](http://www.walnuthillarts.org))
- Applicants must support their application with a VHS videotape, DVD, or CD of their work. Your audition materials may include any previous performance material, and/or current acting or musical theater work.

Return your application to:

Walnut Hill School  
Office of Admission and Placement  
12 Highland Street  
Natick, MA 01760

It is our goal to enroll students who have the commitment and maturity to benefit from the program. Please call the Office of Admission and Placement at (508) 650-5020 if you have any questions.

## TUITION & FINANCIAL AID

Updated tuition and financial aid information is available at [www.walnuthillarts.org](http://www.walnuthillarts.org).

A small amount of need-based financial aid is available on a limited basis. To be considered for financial aid, both parents/guardians are required to supply a copy of the most recent year's IRS 1040 and all applicable schedules with the application for admission.

## SUMMER RESIDENTIAL LIFE

### Residence Halls

Students live in one of the eight residence halls located on campus. While Walnut Hill has a large campus, no residence hall is more than a five-minute walk from the classrooms and performance spaces. Rooms range from singles to triples. Each hall has its own common room with a television, DVD/VCR, microwave, and refrigerator. The halls are charming, well kept, and will make residents feel at home. There are approximately twelve students per Resident Advisor.

### Resident Advisors

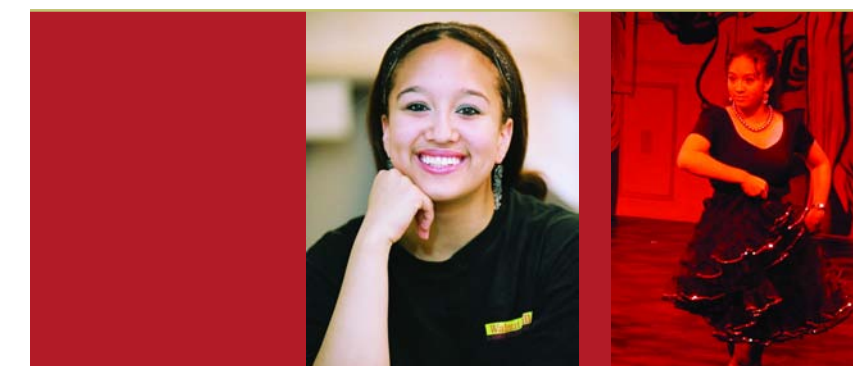
Walnut Hill hires talented and devoted Resident Advisors (RA) who monitor the residence halls, assist students, and organize social activities. RA's are typically college students or graduates who have a background in student life and/or the arts.

### The Walnut Hill Campus Center

The Walnut Hill campus includes a Campus Center available for use by students in the summer. The Campus Center houses a bookstore, mailroom, lounge with big screen television, and a balcony overlooking campus.

### Fitness Center, Pool & Recreation

Walnut Hill has an excellent Fitness Center and pool, available to all summer students and faculty. The pool is open 9 hours a day 7 days a week, and the fitness center is available at selected times throughout the week. Weekend field trips to local area attractions are scheduled. Students also have access to email through Walnut Hill's IT department and computer center.



### Dining on Campus

We believe that healthy eating contributes to a sound mind and body. Meals are served three times each day (twice on Sunday with a late breakfast/brunch). A salad bar and vegetarian options are available at every meal. In addition, students are able to purchase snacks from the bookstore.

### Health & Wellness

Walnut Hill has a Health Center staffed by registered nurses. In addition, the School has an on-call physician and is located only a few minutes from a hospital for emergency care. The health staff also includes a physical therapist.

## WALNUT HILL SCHOOL

Founded in 1893, Walnut Hill School is widely regarded to be the premier arts secondary boarding and day school in the United States. The mission of Walnut Hill is to educate talented, accomplished and intellectually engaged young artists from all over the world. The School does so in a diverse, humane and ethical community. The specialized and accomplished faculty supports the development and enhancement of artistic skills and training, and provides the tools for intellectual achievement.

We invite you to learn more about the School by visiting [www.walnuthillarts.org](http://www.walnuthillarts.org).



## ASHLEY WILLIAMS WALNUT HILL

I found the Walnut Hill Summer Program to be extremely professional and inspiring. The unique care and respect given to the students convinced me to continue to concentrate on my art at the highest level during the school year as well. Now a Senior at the Walnut Hill School, I consider my decision to take part in the Walnut Hill Summer Program as one of the best I have ever made.

Walnut Hill School policy prohibits discrimination on the basis of race, color, national or ethnic origin, religion, sex, handicap, sexual orientation, or veteran status. This policy extends to all rights, privileges, programs, and activities, including admission, employment, financial assistance, and educational, arts, and athletic programs.

Disclaimer: All information contained in these pages is as current as possible, but is subject to change at the discretion of Walnut Hill School without notice.